

Quality Central

Word from the Chair

By Don Smith

Passing of the baton. Have you ever watched a really good relay team work together? I mean like the Olympics, or college track teams? And I'm talking about the sprinters, not the distance runners. Where every member of the team is going all out and things are happening really fast. A really good relay team will make it look so easy, with every person in exactly the right place at the right time, with nobody having to slow down or slack off, with every member giving it everything they've got, with such incredible focus that you can't help but cheer for them. One small slip-up, a fraction of an inch off in the passing zone, a fraction of a second off in the hand-off, a hesitant step, an untimely glimpse, any of these things can take what is a beautiful fluid motion and make it a disaster. So how does this apply to us? Well we all work in teams ourselves. They might be our natural work groups, or project teams, or interdepartmental work teams, or just our normal cross-functional processes. But there are "hand-offs" happening most, if not every day. How are we doing with these hand-offs? Have we prepared, do we know our steps, are they well documented, how smooth are they? If we were an Olympic hopeful sprint team, would we have a chance, or would we be embarrassed to have anyone watch us on ESPN? A really good hand-off on a track is not just one that doesn't lose you any time or position, but it's one where you can gain on your opponents (assuming their hand-off is not as good as yours!). So how do yours stack up? We in Section 1218 are coming around the bend of a baton pass ourselves – we're transitioning to a new program year, a new business plan, a new budget, and some new board members. Every year as we transition, we look back and evaluate (sort of liking watching your hand-offs on video!). We strive to improve, we organize a little better, we formalize, we practice. One of the tools we use is our annual Section Survey. If you haven't already, please take the time to fill it out today (http://asq.qualtrics.com/SE/?SID=SV_1MSlrFA7E7mBerq&SVID=). We may not be Olympic class (yet!) but we're going to do our best to launch the Section into the 2010-2011 year striving for even more improvements in what we offer to each member and "providing opportunities for people to improve themselves and our communities."

Section 1218 Member Appreciation Networking Event

Monday, June 21, 2010

ABOUT THE EVENT

Bring your family and enjoy an evening of networking with other quality professionals at Athletic Park in Wausau. Our group will be located in the Ministry Health Care Gantner Garder along the first base line. This reserved area consists of a park like atmosphere with beautiful landscaping, bench seating, a small private deck, and on-field seating. Enjoy all you can eat and drink as you exchange ideas with colleagues from a variety of businesses and industries. If you are looking to expand your network, are in search of best practices, or looking for a new career opportunity, you will want to attend this event!



VS.



Schedule

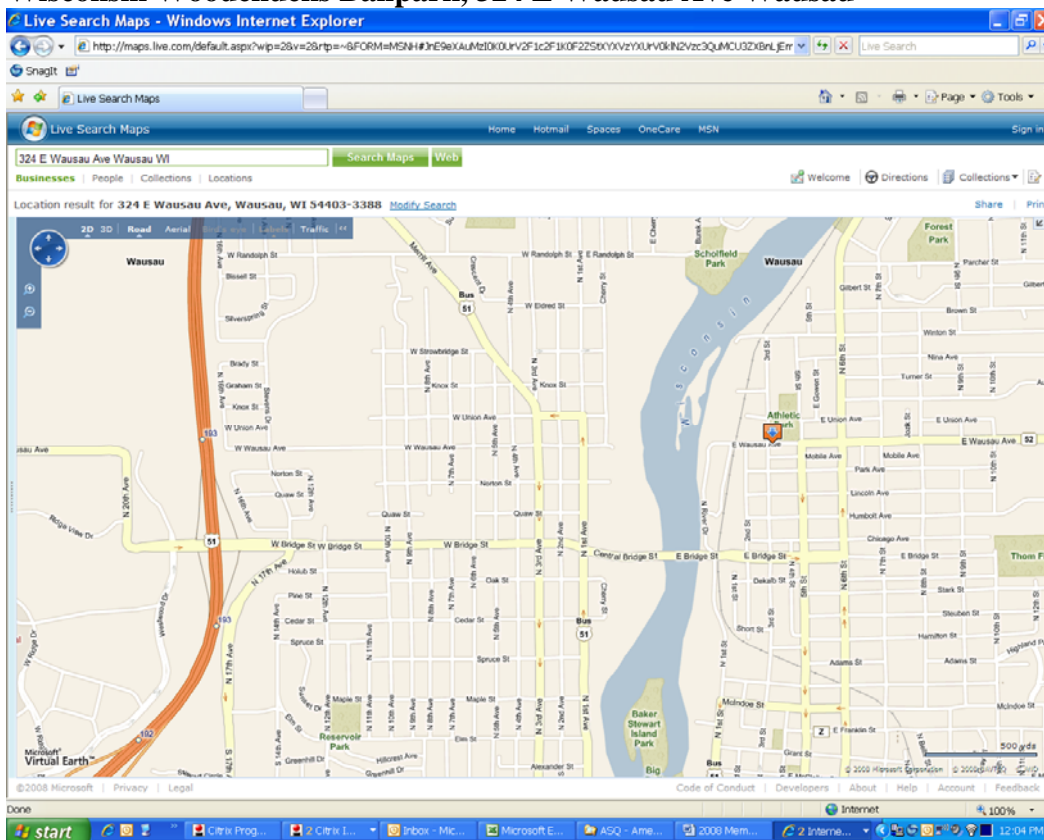
5:30 pm	Arrival / registration
5:45 pm	Section Business & Announcements
6:00 pm	Open Networking
6:35 pm	Wisconsin Woodchucks vs. Wisconsin Rapids Rafters

Our group will be located in the Ministry Health Care Gantner Garden (which is at the end of the 1st base line).
Prices for the evening (**This price includes game ticket and All you Care to Eat & Drink**):

Adults \$10.00 each
Children 5 – 12 years old \$5.00 each
Children 4 and under – Free
Total Family Package \$30.00 (max)

Registration Deadline: NOON - Thursday, June 17th

Directions to Athletic Park, Wisconsin Woodchucks Ballpark, 324 E Wausau Ave Wausau



From US-51 / 39

Take the Bridge Street exit - exit number 193

On Bridge Street head East

Stay on Bridge Street until you cross the Wisconsin River. After the bridge turn left at the stop light onto 3rd Street. Straight on 3rd Street to the ballpark. The ballpark will be on the right hand side of the street. There is lots of parking on the South side of the ballpark. Enter the ballpark on the East side (5th Street side) of the field. The gate will be marked for the ASQ group.

Many Thanks to the Volunteers Who Make Our Section Excellent

Many thanks to our 2009-2010 leadership board and team members! It's been an excited year and we have seen growth in both our Section membership, our mailing list of those who are not ASQ members but are interested in quality and what we are doing in Central Wisconsin, and in attendance at our monthly dinner meetings and tours. Many of you have been serving in these and other capacities for many years, and you should know that your effort and commitment to quality has an effect. To the rest of our members and friends, let these folks know when you see them (maybe at the Woodchucks game!) that you appreciate what they do!

Section Chair (elected position) – Don Smith
Section Vice-chair (elected position) – Bill Martin
Section Treasurer (elected position) – Terri Erickson
Section Secretary (elected position) – Kari Wroblewski
Membership & Voice of the Customer Chairs – Scott Bensen
Programming Chair – Chris Spranger
Outreach & Nominating Chairs – Jerry Hasenohrl
Certification & Recertification Chairs – Mike Keel

Auditing Chair – Bill Giede
Internet Liaison – Kerry Sparks
Programming Team:
Chris Spranger (chair)
Lori Richter
John Foreman
Craig Hazeldine

Newsletter Team/Contributors:
Kari Wroblewski (chair)
Don Smith
Hal Raymer
Dave Muth
Bill Giede
Bill Martin
Scott Bensen

Our 2010-2011 board looks similar, but with a few key changes to help us continually improve:

Section Chair (elected position) – Bill Martin
Section Vice-chair (elected position) – Chris Spranger
Section Treasurer (elected position) – Paul Swanborg
Newsletter Chair – Terri Erickson
Programming Chair – Craig Hazeldine

Our functioning teams are looking for contributors. If you have an interest in Programming, the Newsletter, or Outreach to the Central Wisconsin community, please let one of the board members know. These are great ways to get involved, network, and gain experience. If there is another area that interests you, let us know as well! We are always looking for new ideas and for ways to let people use their skills and interests to help the Section.

Job Opportunity



Risk / Regulatory Affairs Analyst

ESSENTIAL DUTIES AND RESPONSIBILITIES include the following. Other duties may be assigned.

- Create and maintain a master process validation plan that is developed based on risk profiles.
- Develop production control and component qualification plans based on risk profiles.
- Develop in-process and final inspection plans based on risk profiles.
- Establish Receiving Inspection sampling levels/frequencies based on risk profiles.
- Facilitation and maintenance of HARM reviews for product launches, product updates, MDR's and complaint trending
- Participate in developing product and component reliability expectations and qualification testing programs in cooperation with the engineering team.
- Assist with root cause failure analysis to help identify and define product improvement initiatives.
- Review all complaints for regulatory status/assessment. Evaluate to determine whether an investigation is required.
- Support maintenance of the customer complaint system.
- Evaluate complaints to determine if Medical Device Reporting (MDR) is required in accordance w/21 CFR part 803

- Support maintenance of the of the MDR system
- Assist with the gathering of documents requested in support of legal claims.

EDUCATION and/or EXPERIENCE

- Bachelor of Science degree in Reliability, Quality or equivalent.
- Minimum of 3-5 years risk/reliability related manufacturing experience.
- Medical Device experience preferred
- Working knowledge of FDA and ISO regulations
- ASQ CRE or QPA certification highly preferred
- RAPS certified desired
- Knowledge of standard quality and reliability tools including experience in application and use of FMEA, DFMEA, PFMEA, FMECA, HARM (Risk Analysis), Fault Tree Analysis, Root Cause and Corrective/Preventative Action.

For more information, please go to www.joerns.com

Section 1218 Website & Information

<p>Questions on membership information? Contact: Don Smith Stevens Point Mill, New Page Specialty Papers Phone: (715) 345-8069 Fax: (715) 345-8750 Mobile: (715) 213-4565 e-mail: don.r.smith@newpagecorp.com</p>	<p>Questions on recertification journals? Contact: Michael Keel Donaldson Co. Phone: (715) 341-5311 x349 Fax: (715) 341-0318 e-mail: Mike.Keel@Donaldson.com</p>
--	--

Education Opportunities

Section 1218 Fall Conference: Process Based Leadership Tuesday, October 5th, 2010

Mark your calendars!

In this interactive session participants will receive a lively overview of the four key elements necessary to create and sustain a high performance mentality and process throughout any organization. The presenter will focus strongly on the role of organizational leadership to create, emulate, communicate, and reinforce the non-negotiable strategies necessary to sustain business success. This presentation will look at the real-world business challenges facing organizations today, as well as give participants a specific implementation methodology to begin practicing upon immediate return to the workplace. For more information visit <http://www.competitive-solutions.net/pbl.htm>.

More information, location, and registration information will be provided in future ASQ section 1218 newsletters.

Baldrige/WFA Criteria Seminar with Dr. Mark Blazey June 29 - 30, 2010 Oshkosh, WI

Dr. Mark Blazey reprises his popular 2009–2010 Criteria workshop in the Fox Valley on Tuesday and Wednesday, June 29 and 30. The seminar will familiarize participants with the [Baldrige Criteria for Performance Excellence](#), a management framework based on cutting-edge best practices from the highest-performing organizations in the world with a high focus on organizational sustainability in good times and bad.

Details and registration materials can be downloaded at <http://www.forwardaward.org>. Call us at (608) 663-5300 for more information.